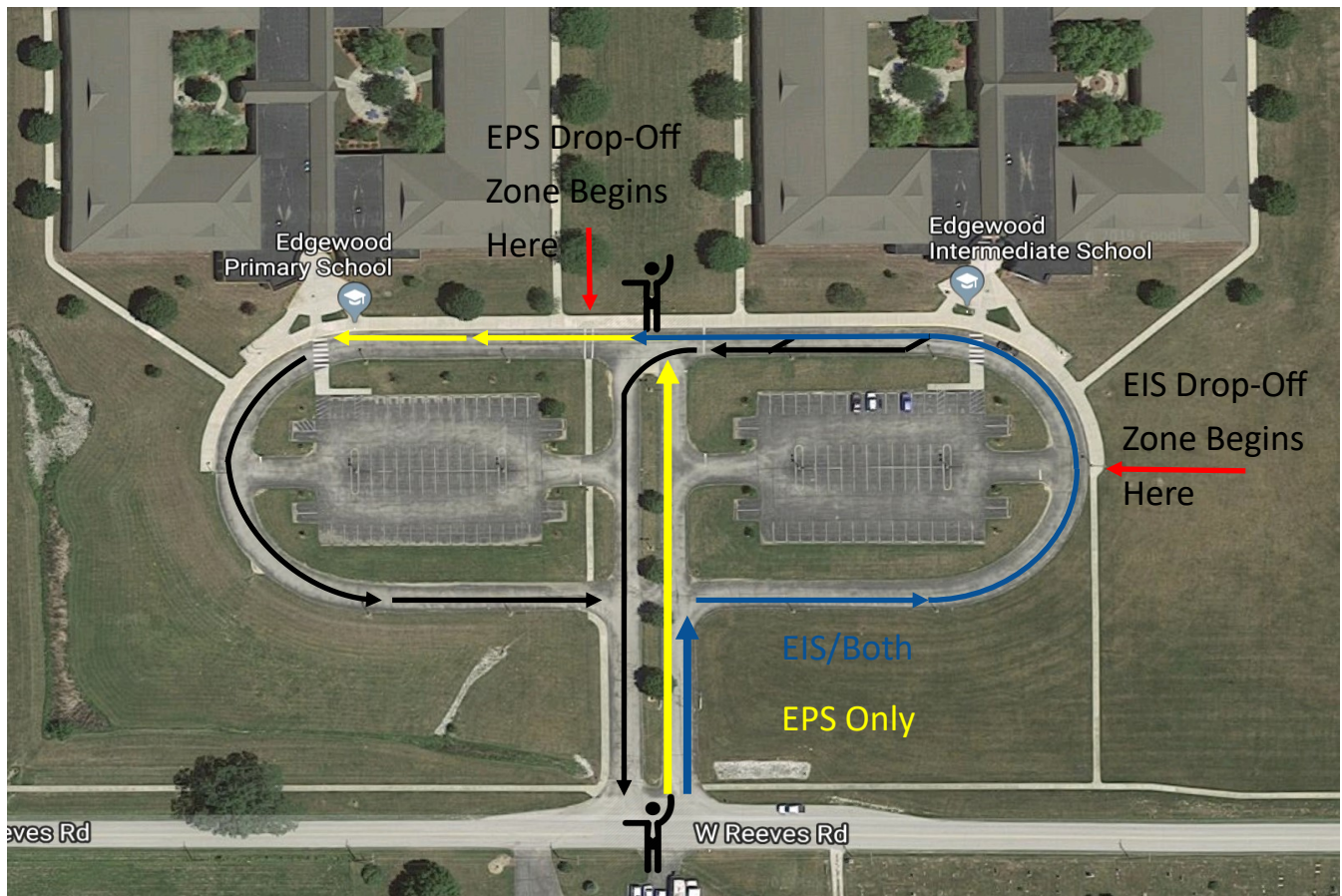




Richland-Bean Blossom Community School Corporation

# EDGEWOOD INTERMEDIATE SCHOOL MORNING DROP-OFF PROCEDURES



The map above illustrates the flow of traffic during our morning drop-off time. **Please be prepared to follow directions from staff directing traffic!**

Those cars dropping off only at EPS should approach the school in the left lane of the drive. At the end of the main drive they will turn left and pull up along the curb. Those cars dropping off students at both EPS and EIS will need to take the first right turn off of the main drive and continue on to EIS. If necessary, after dropping off your EIS student the car may continue on to the EPS drop-off zone. However, it is helpful to traffic flow to drop off EPS students in the EIS drop zone and allow them to walk on to EPS, or utilize the EPS approach and drop off EIS students and allow them to walk to EIS.

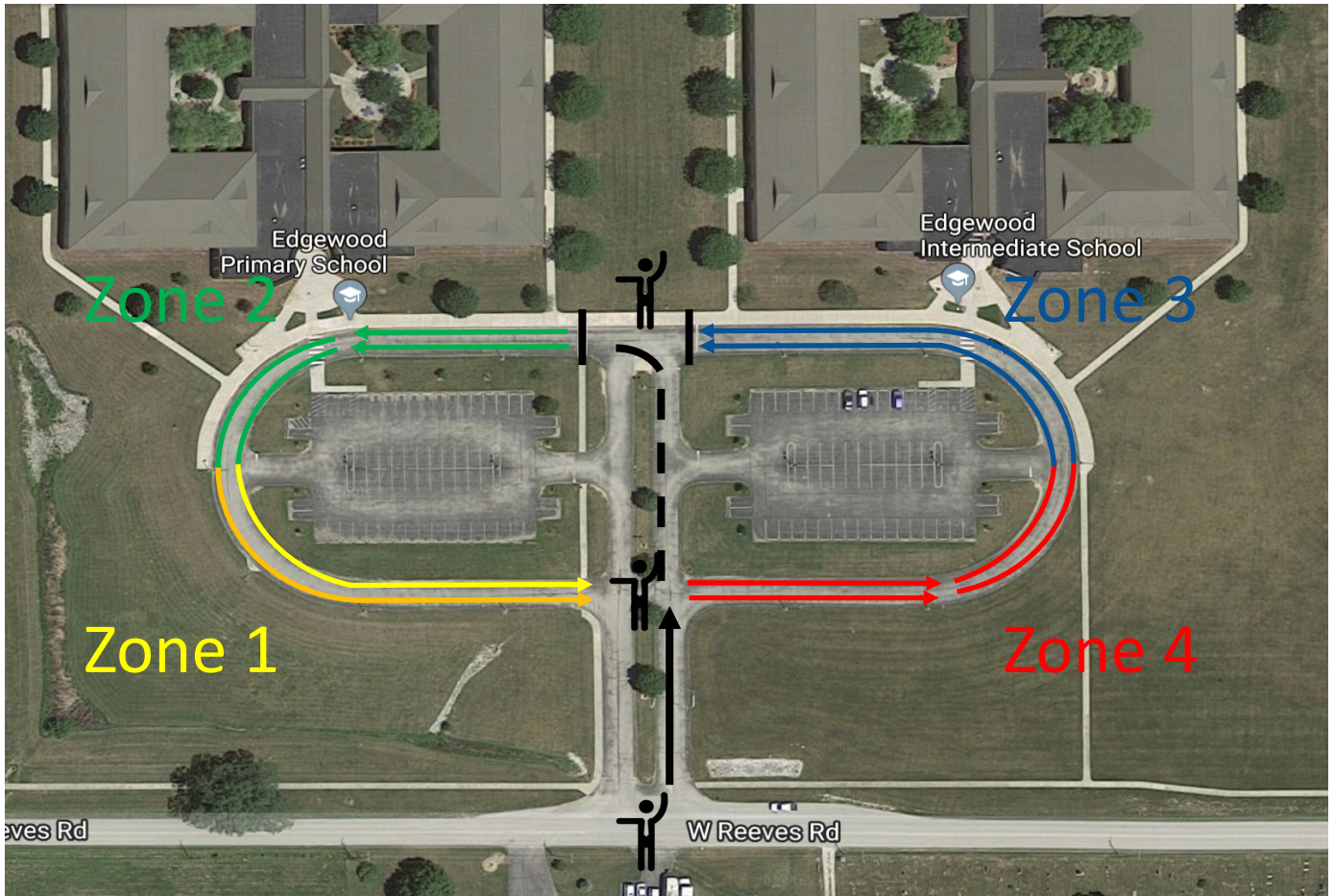
Students should exit the right side of your car after you stop along the curb. Staff will greet them and help them get out of the car and into the building safely. **Adults should NOT exit the vehicle in the drop-off zone.** Students will be directed to walk behind the planters as they approach the school. If you must walk your child into school, please park in the parking lot and escort them to the front door where our staff will meet them.

**Safety first!** Please refrain from looking at your phone once you enter the school drive.

If you have any questions or concerns, please contact the office. **Thank you!**



# EDGEWOOD INTERMEDIATE SCHOOL AFTERNOON PICK-UP PROCEDURES



Due to the high volume of students being picked up at the end of the day, we have two pick-up waves. The map above illustrates the arrangement of cars for our daily student pick-up. **Please be prepared to follow directions from staff directing traffic!**

**No matter where your child attends school, you may park in any zone.**

Wave One (last names A-K and pre-arranged adjustments) should fill all 4 pick-up zones between 2:45 and 3:05. Please do not arrive earlier than this time! Last names L-Z should arrive no earlier than 3:10.

A staff member from each building will come by your car. Be prepared to tell the staff member your child's name as they come by. **Please remain in your vehicle.**

Once children are safely loaded in a zone, it will be released. Between 3:05-3:10 the gates will close for the first wave. Cars arriving after this point (Last names L-Z, pre-arranged adjustments, and additional first wave families) will be held in the main drive until Zones 1 & 2 are released. They will then fill in Zones 1 & 2 and the process will begin again.

Please do not park in a crosswalk or on the grass along Reeves Road, and please refrain from using your phone in the school drive!

If you have any questions or concerns, please contact the school office. **Thank you!**